



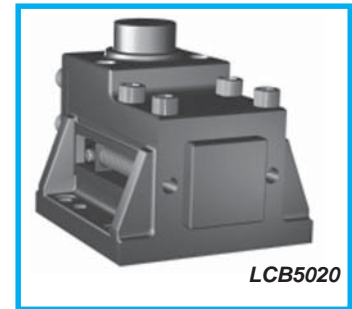
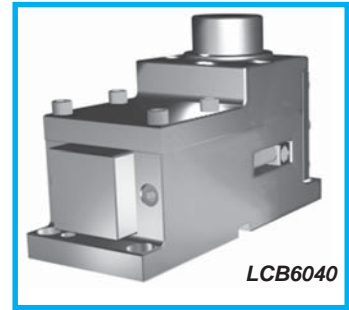
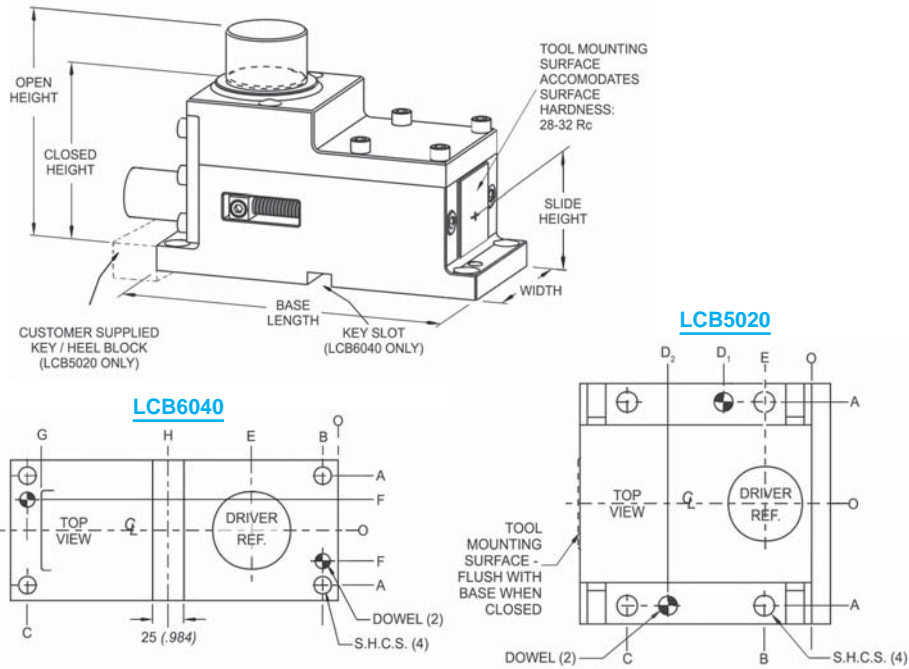
TRUSTED SOLUTIONS AND INNOVATION

Bump Cams

- ◆ For piercing, flanging and trimming
- ◆ Total component interchangeability
- ◆ Hardened and ion-nitrided wear components



Bump Cam – LCB Series



| Part Number | A | B | C | D ₁ | D ₂ | E | F | G | H | Slide Travel | Open Height | Closed Height | Slide Height | Slide (sq.) | Width | Base Length |
|-------------|----------------|----------------|-----------------|----------------|----------------|----------------|-------------|---------------|-----------------|----------------|-----------------|-----------------|----------------|----------------|-----------------|------------------|
| LCB6040 | 44.5 (1.75) | 12.5 (.49) | 251.5 (9.90) | N/A | N/A | 70.0 (2.76) | 25 (.98) | 240 (9.45) | 137.5 (5.41) | 40.0 (1.57) | 195.0 (7.68) | 148.0 (5.83) | 56.5 (2.22) | 63.0 (2.48) | 114.0 (4.49) | 265.0 (10.43) |
| LCB5020 | 55.0 (2.17) | 25.5 (1.00) | 99.5 (3.92) | 47.5 (1.87) | 77.5 (3.05) | 25.0 (.98) | N/A | N/A | N/A | 20.0 (.79) | 138.0 (5.43) | 114.0 (4.49) | 45.0 (1.77) | 50.0 (1.97) | 130.0 (5.12) | 125.0 (4.92) |

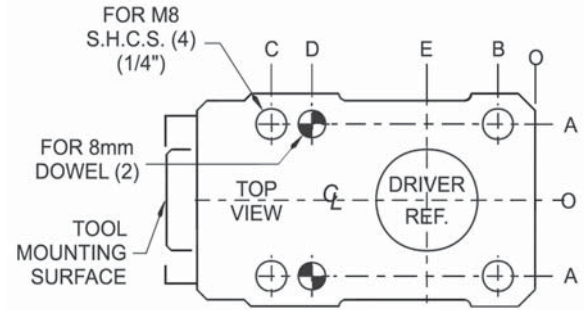
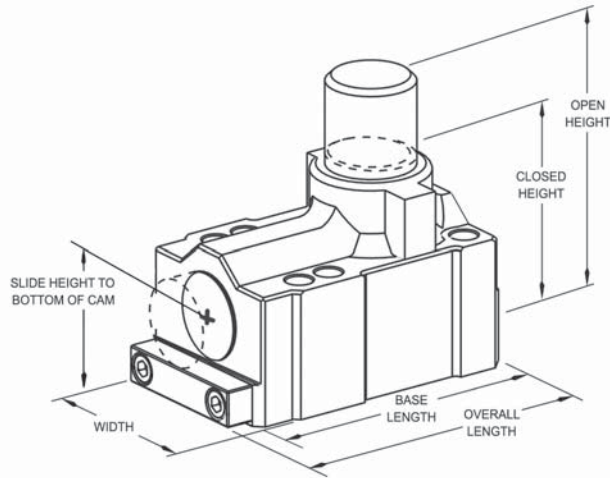
◆ The maximum dynamic load ratings have a 2:1 safety factor to assure optimum service life.

◆ Grease fitting installed for single point lubrication. (Moly fortified NLGI #2 grade Lithium 12 grease.)

| CAM PART NUMBER | | LCB6040 | LCB5020 |
|---|--|------------------------|-----------------------------|
| Load Rating | Slide output working force at maximum Dynamic Load | 35.6 kN (4 tons) | 22.2 kN (2.5 tons) |
| Replacement Return Spring | Part Number | IMD016076 (4 required) | ILD020076 (2 required) |
| | Pre-Load | 213 N (48 lbs.) | 96 N (21.5 lbs.) |
| | Final Load (full stroke) | 811 N (182 lbs.) | 730 N (164 lbs.) |
| Optional Spring Return Booster Kit | Part Number | B6040BSK | B5020BSK |
| | Diameter | 41mm (1.61) | 34.5mm (1.36) |
| | Length | 153mm (6.00) | 89mm (3.50) |
| Replacment Booster Spring | Part Number | IMD040139 | ILD032076 |
| | Pre-Load | 218 N (49 lbs.) | 98 N (22 lbs.) |
| | Final Load (full stroke) | 1907 N (428 lbs.) | 238 N (53.5 lbs.) |
| Mounting Requirements | Dowels | 2 X 12mm | 2 X 10mm |
| | Screws | 4 X M12 S.H.C.S (1/2") | 4 X M10 S.H.C.S. (3/8") |
| | Keyway/Heel Block | 25mm slot (as shown) | Customer supplied (at rear) |
| Optional Nitrogen Spring Booster Kit | Part Number | (not available) | B5020GSK |

Inch reference dimensions shown in brackets.
All dimensions are for reference only.
No tolerance is stated or implied.

Bump Cams – LCM Series

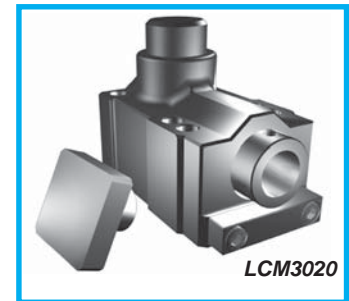


| PART NUMBER | A | B | C | D ±0.01 | E | SLIDE TRAVEL | OPEN HGT. | CLOSED HGT. | SLIDE HGT. | SLIDE DIA. | WIDTH | BASE LENGTH | OVERALL LENGTH |
|-------------|----------------|---------------|-----------------|-----------------|----------------|---------------|-----------------|----------------|----------------|----------------|----------------|-----------------|-----------------|
| LCM3020 | 22.5 (.89) | 11.0 (.43) | 78.0 (3.07) | 66.0 (2.60) | 32.0 (1.26) | 20.0 (.79) | 95.0 (3.74) | 71.0 (2.80) | 30.0 (1.18) | 30.0 (1.18) | 66.0 (2.60) | 100.0 (3.94) | 109.5 (4.31) |
| LCM4025 | 30.0 (1.18) | 9.0 (.35) | 118.0 (4.65) | 106.0 (4.17) | 37.0 (1.46) | 25.0 (.98) | 119.0 (4.69) | 89.0 (3.50) | 40.0 (1.57) | 40.0 (1.57) | 79.0 (3.11) | 127.0 (5.00) | 136.5 (5.37) |

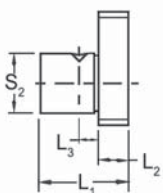
◆ The maximum dynamic load ratings have a 2:1 safety factor to assure optimum service life.

◆ Grease fitting installed for single point lubrication. (Moly fortified NLGI #2 grade Lithium 12 grease.)

| CAM PART NUMBER | | LCM3020 | LCM4025 |
|---------------------------|--|----------------------|-----------------------|
| Load Rating | Slide output working force at maximum Dynamic Load | 8.9 kN (1.0 tons) | 13.3 kN (1.5 tons) |
| Replacement Return Spring | Part Number | ILD012076 | ILD016102 |
| | Pre-Load | 38 N (8.5 lbs.) | 78 N (17.5 lbs.) |
| | Final Load (full stroke) | 328 N (73.7 lbs.) | 468 N (105 lbs.) |



SQUARE ADAPTERS for LCM SERIES



Adapter face will accommodate mounting & dowel holes for standard or special punch retainers.

Adapter hardness: 28-32 Rc.

| PART NUMBER | S ₁ | S ₂ | L ₁ | L ₂ | L ₃ | A |
|-------------|----------------|----------------|----------------|----------------|----------------|---------------|
| LCM3002 | 38.0 (1.50) | 20.0 (.79) | 30.0 (1.18) | 10.0 (.39) | 6.5 (.26) | 14.0 (.55) |
| LCM4002 | 50.0 (1.97) | 30.0 (1.18) | 30.0 (1.18) | 10.0 (.39) | 6.5 (.26) | 20.0 (.79) |

*Inch reference dimensions shown in brackets.
All dimensions are for reference only.
No tolerance is stated or implied.*



Bump Cams



Distributed by:

www.danly.com
info@anchordanly.com

WITHIN THE USA & CANADA
CALL: 800-652-6462
FAX: 800-406-4410

OUTSIDE THE USA & CANADA
CALL: 001-248-489-7816
FAX: 001-248-553-6842



© 2011 IEM. All rights reserved.

 **The Anchor Danly Company**

DS402-A1 04/11